

COINAtlantic

Andrew Sherin

Director, ACZISC Secretariat

www.coinatlantic.ca

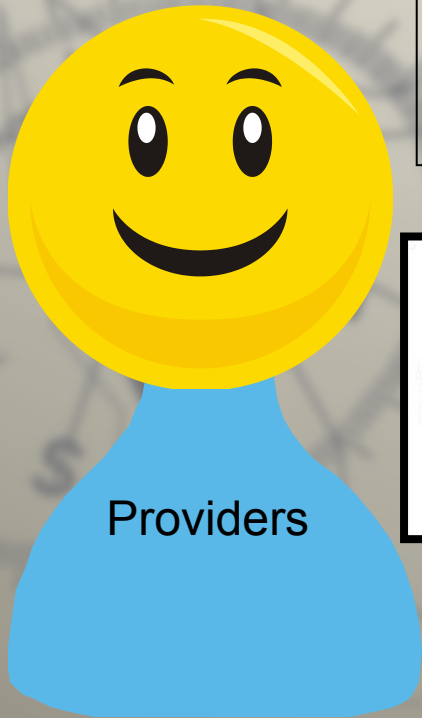
a.sherin@dal.ca

Presentation outline

- COINAtlantic “Chain for Information Access”
- COINAtlantic web-based tools
- Data accessibility benchmark project
- Metadata integration tools from the International Coastal Atlas Network

COINAtlantic

“Chain for Information Access”

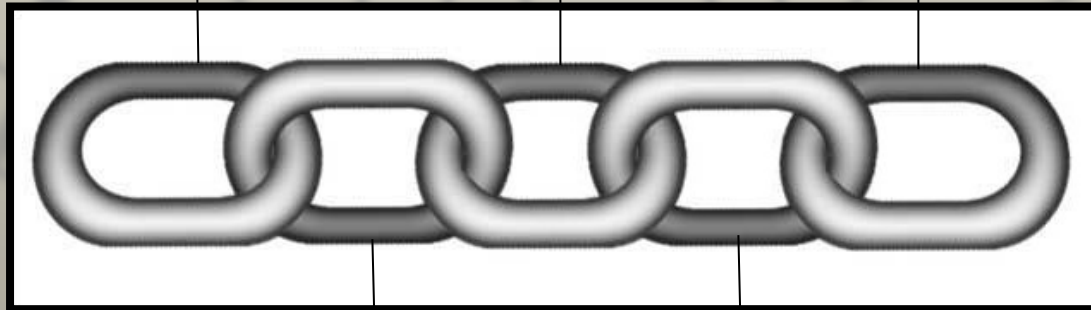


Providers

1) Geospatial Information in WMS or KML format

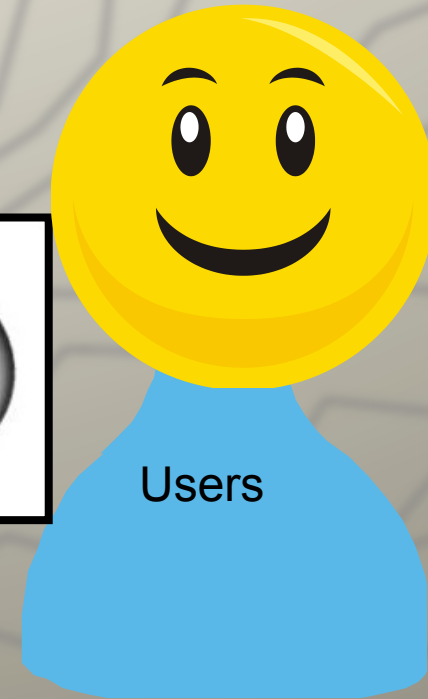
3) Text file Indexed by Google/Bing

5) View Overlay Process Output



2) Metadata text embedded in WMS/KML

4) COINAtlantic Search Application



Users

Well managed silos



COINAtlantic

“Chain for Information Access”

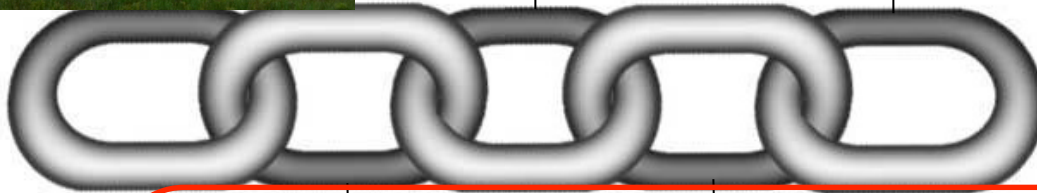
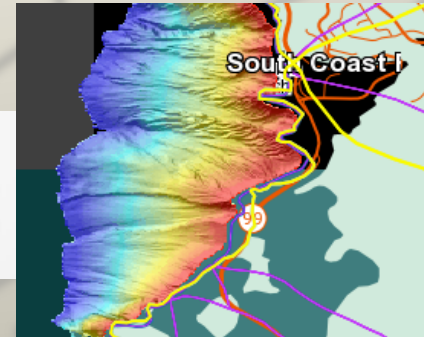
Well Managed Silos



Indexed by



Your Map



Providers

Users

A screenshot of the GeoContent Generator interface. It features a map on the left and a text box on the right containing metadata for a document titled 'Incorporating Concerns of Coastal Stakeholders in Planning and Management'. The text box includes fields for Contact Name, Contact Email, Contact Mailing Address, Title of Government, Title of Government, Description, URL, Website Address, and URL link to metadata mapping server. At the bottom, it says 'GeoContent Generator'.

A screenshot of the COINAtlantic Search Utility interface. It shows a search bar, search results, a map, and map layers. The search results list various resources like 'Massachusetts Ocean Resource Info', 'Endless Programs - USGS Pacific C.', and 'Volcanoes of the World'. The map shows the South Coast region with various layers selected. The interface includes a 'Welcome to the COINAtlantic Search Utility' header and a 'Map Gallery | Feedback' link.

COINAtlantic Geocontent Generator (CGG)

Step 4: Preview your KML file and Modify Attributes



Organization Project Publication Data/Information [i](#)

ATTRIBUTE	VALUE
Contact name* i	Neil Gall
Contact e-mail* i	neil.gall@meopar.ca
Title of Geocontent* i	2012-2013 Annual Report MEOPAR

Welcome to the COINAtlantic Search Utility



[Map Gallery](#) | [Feedback](#)

Search for Map Layers

Search Results

Live Search | Local Database Search

Title	Link
Ocean Tracking Network (OTN)	http://coinatlantic.ca/cgg/templ...
Ocean Tracking Network (OTN)	http://coinatlantic.ca/cgg/templ...
Ocean Tracking Network (OTN)	http://coinatlantic.ca/cgg/templ...
Ocean Tracking Network (OTN)	http://coinatlantic.ca/cgg/templ...
Ocean Tracking Network (OTN)	http://coinatlantic.ca/cgg/templ...
Ocean Tracking Network (OTN)	http://coinatlantic.ca/cgg/templ...
Ocean Tracking Network (OTN)	http://coinatlantic.ca/cgg/templ...
Ocean Tracking Network (OTN)	http://coinatlantic.ca/cgg/templ...
BDSM Models and Photographers	http://umapper.s3.amazonaws...

Map

Save | About

Map Ready -24.28965, 38.65803

Map Layers

Layers

- stations
- Chlorophyll Concentration (MODIS-A
- Places [NRCAN toporama]
- Feature Names [NRCAN toporama]
- Wetlands [NRCAN toporama]
- Road Network [NRCAN toporama]
- Vegetation [NRCAN toporama]
- GeoNB Basemap Topo (REST API)
- Land [NRCAN toporama]
- Bathymetric Chart [Bluefin]
- Bathymetric Chart [GEBCO]

Add WMS Layer | Remove Layer

Additional Search Information

URL website address	http://oceantrackingnetwork.org/
URL link to functional mapping server (WMS/WFS)	http://global.oceantrack.org:8080/geoserver/wms?request=getCapabilities&service=wms
URL link to existing ISO standard metadata	http://members.oceantrack.org/data/discovery/GLOBAL.htm

Barriers to Data Accessibility

from ACZISC January 2013 workshop

- ▶ Conflicting government policies.
- ▶ Lack of common approaches so things don't work together and capacity is diminished.
- ▶ Projects without data management policies.
- ▶ Difficult to:
 - access data behind interpretations;
 - find metadata to enable reuse of data;
 - find the data / information you need STILL!

Barriers to Data Accessibility continued

- ▶ Lack of training and capacity within communities of users and small data providers.
- ▶ Lack of coordination between community, developers, government.
- ▶ Products that are unsuitable for end users.

Benchmark for Data Accessibility (under development)

- Final product: Self assessment tool
- Evaluation framework based on modified (improved?) Government of Canada operating principles for the Open Government website
- Modified using the G8 Open Data Charter, Open Data Policy (USA), OECD Principles and Guidelines for Access to Research Data from Public Funding

International Coastal Atlas Network

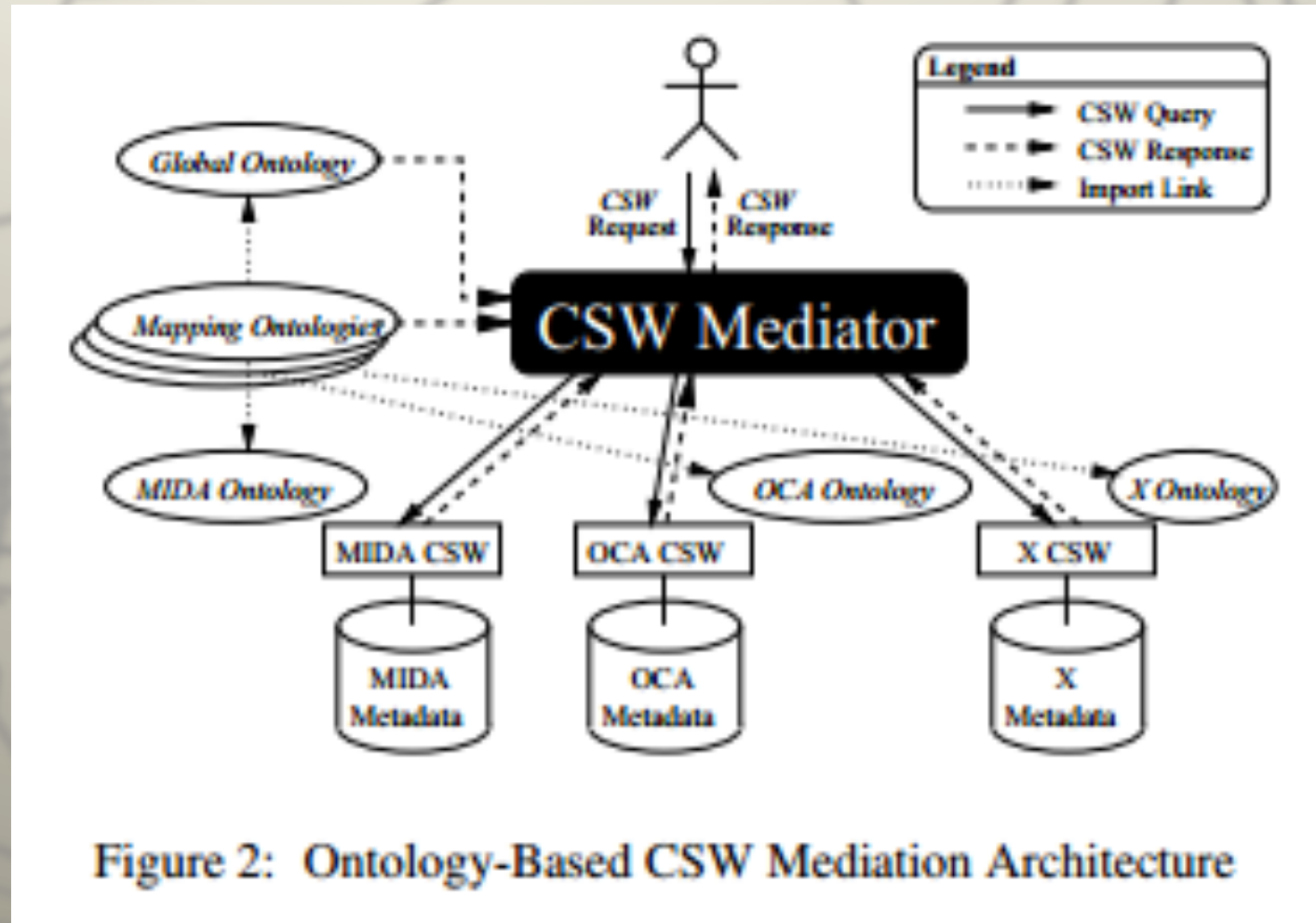


Figure 2: Ontology-Based CSW Mediation Architecture

After Lassoued et al 2008