



SIKU for Community-driven Research & Collaboration

SIKU: The Indigenous Knowledge Social Network is a free web platform and mobile app that supports Indigenous-driven research, education and stewardship activities, as well as collaborations with academics and other partners.



RESEARCH



EDUCATION



STEWARDSHIP

3:13

SIKU

Update your profile

Profile Photo

Community
Sanikiluaq

Organization
Arctic Eider Society

Background & experience...
Active hunter and a long term contributor to programs in Sanikiluaq

Get started

Okiqitait

Create Project Post Manage Posts

About Membership

Member Users

Invite Member
Julia

Search
Search members...

Title... Save

Member

Title... Member

Getting Started



Create an account on SIKU. It's free and easy to use.



Use the SIKU web platform to make a profile for your organization or project and share reports and other information with SIKU users.

How can SIKU support your project?



Built by and for Indigenous communities, which reduces barriers to participation.



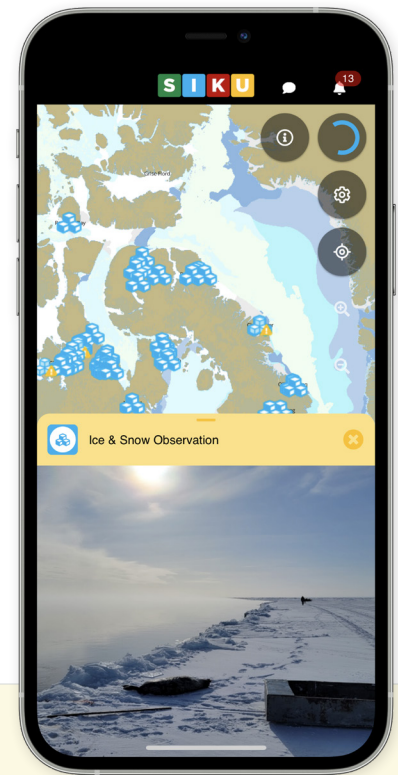
Works offline on-the-land, in near real time, and on low bandwidth.



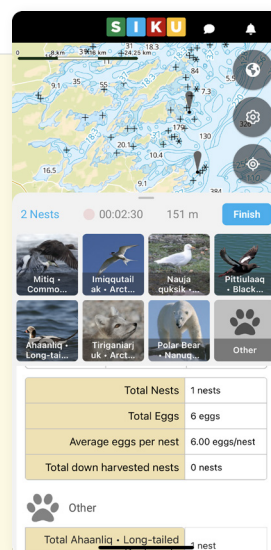
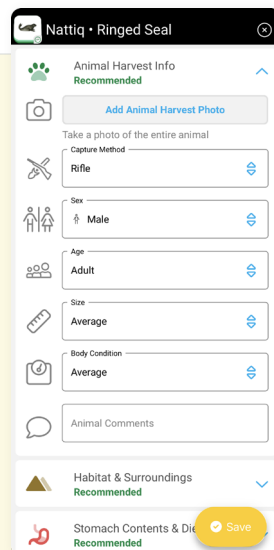
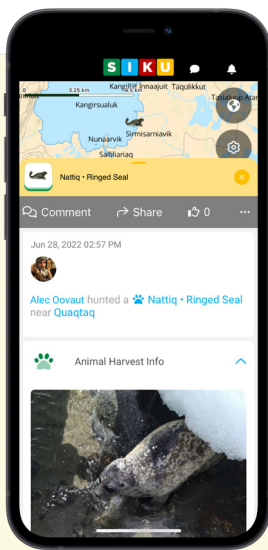
Terms of Use and privacy settings control data access and ensure Indigenous data sovereignty.



Collaborate with partners year-round to bring together western science and Indigenous Knowledge about ice, snow, permafrost, wildlife, climate change and more.



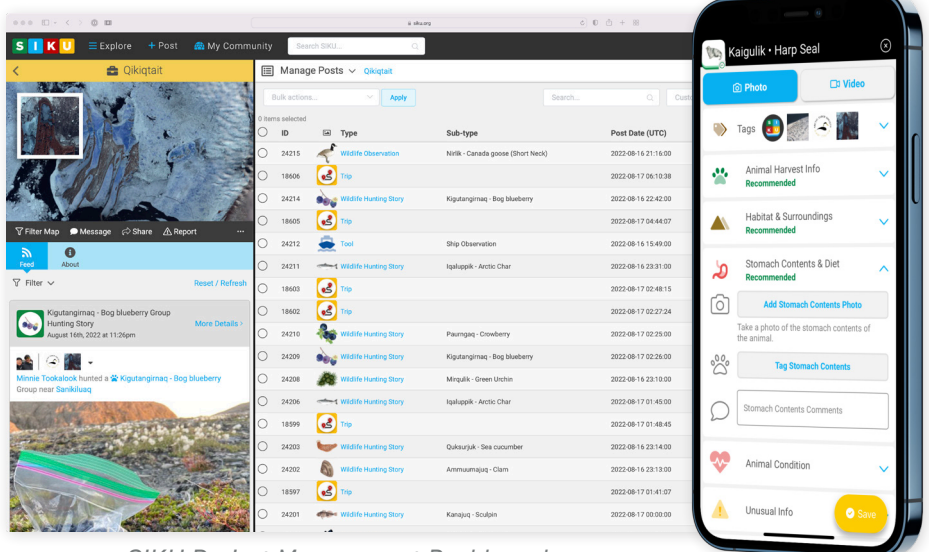
Project members use the SIKU app on their phones to collect and share field data and observations.



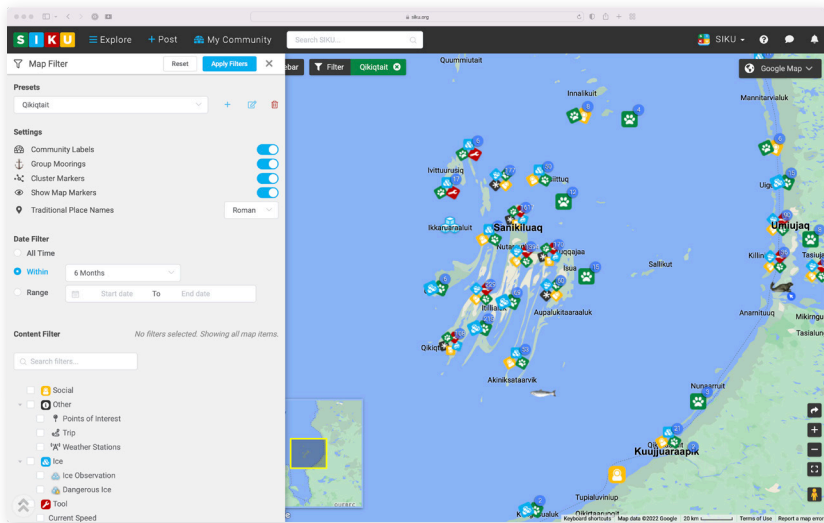
Animal Harvest & Survey Post creation



Use SIKU's project management dashboard to easily view, review/QC and export your data.



SIKU Project Management Dashboard

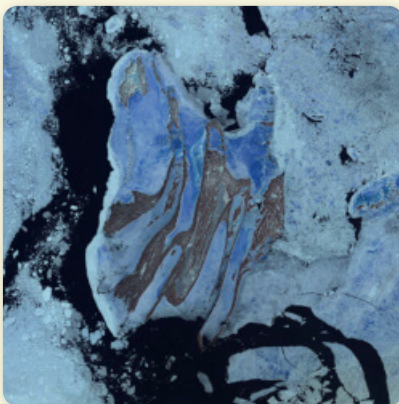


Filter controls for the SIKU web map



Visualize and filter project data on the SIKU map for analysis, real-time management, presentations, team discussions and reporting.

SEE HOW COMMUNITY-DRIVEN RESEARCH PROJECTS ARE INNOVATING WITH SIKU



[Qikiqtaik](#)



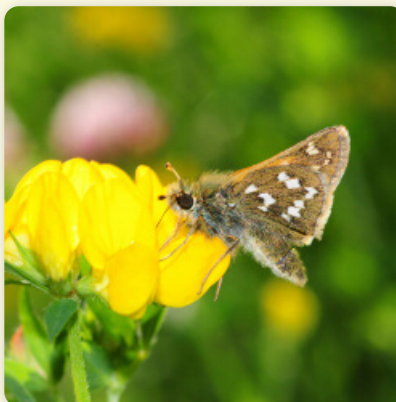
[Inuit Knowledge & Contaminants](#)



[SmartICE Community Projects](#)



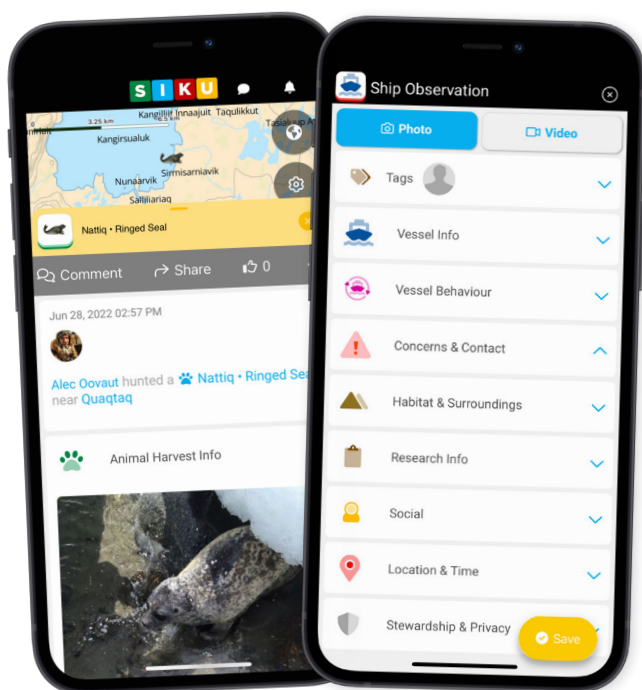
[Nunavik Marine Region Monitoring](#)



[Nunavik Sentinels](#)



[Agqiumavvik Society](#)



Research Tools & Services



Use comprehensive data fields to record measurements, photos, video and observation data customized for over 200+ plant, mammal, fish, bird and invertebrate species.



Research tools support bird surveys, monitoring ship traffic, and recording ice, water and CTD measurements.



Record trip tracks for terrestrial and aquatic wildlife surveys.



Weather information, satellite imagery and maps help your team with planning and travel safety.

34% Fish



29% Shrimp

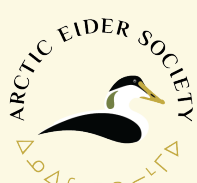
23% Empty Stomach



CONTRIBUTE TO SIKU!

We collaborate with communities and research projects to develop new tools and services on SIKU. Visit siku.org to learn about how SIKU is being used across Inuit Nunangat and beyond.

✉ info@siku.org [sikuapp](https://www.facebook.com/sikuapp) www.siku.org



THE ARCTIC EIDER SOCIETY (AES) is an Indigenous-led charity based in Sanikiluaq, NU that facilitates Indigenous-driven solutions for thriving communities through SIKU and other programs. <https://arcticeider.com>

PRODUCED WITH
SUPPORT FROM

